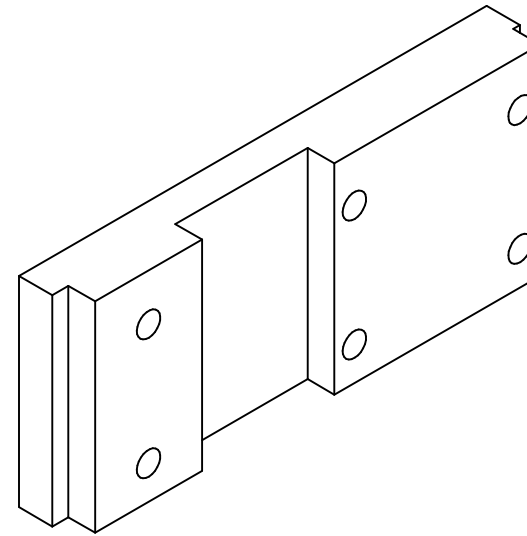
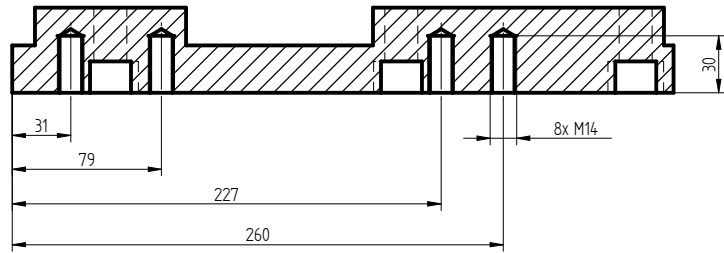
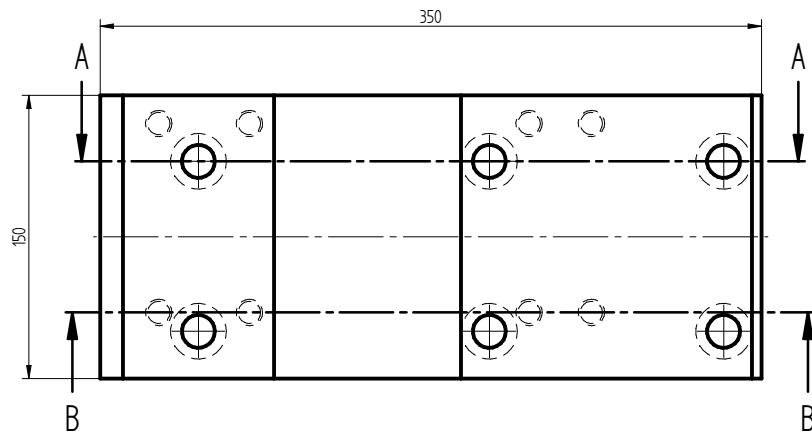


Schnitt B-B

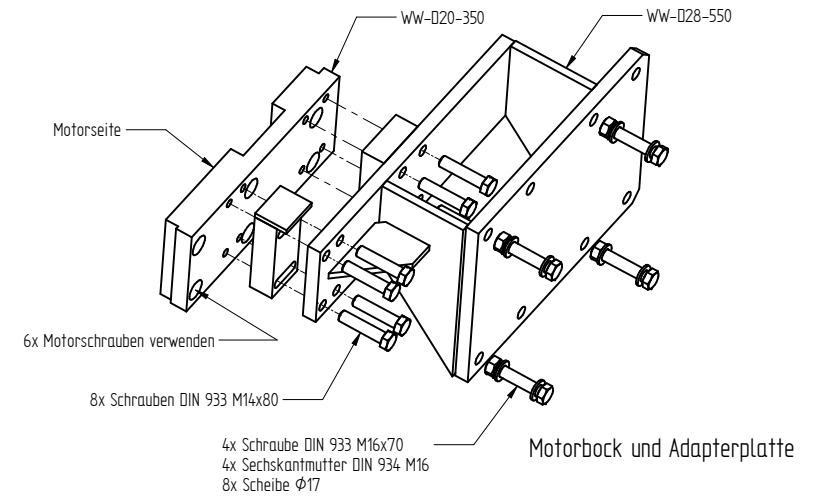
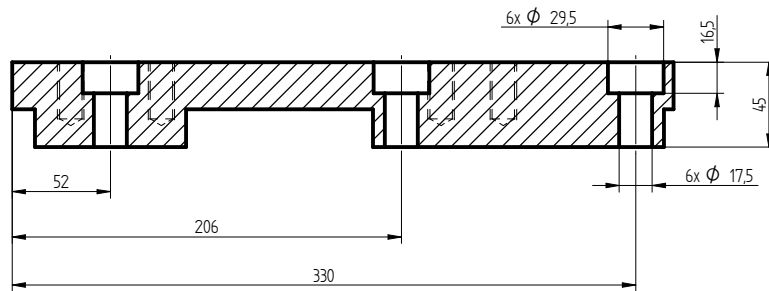


Adapterplatte

15



Schnitt A-A



Passend für Reparaturstände HV-2500, RS-2500, RP-2500
Designed for the stands HV-2500, RS-2500, RP-2500

| | | | | | |
|--------------------|----------|-------------------|--------------|--------------------------------------|-----------|
| Verwendungsbereich | | (Zul. Abw.) | (Oberfläche) | Massstab 1:2 | (Gewicht) |
| | | | | (Werkstoff, Halbzeug) | |
| | | | | (Rohteil-Nr.) | |
| | | Datum | Name | (Benennung) | |
| | | Bearb. 28.06.2017 | Meilinger | Datenblatt / Datasheet | |
| | | Gepr. | | | |
| | | Norm | | | |
| | | | | (Zeichnungsnummer) | Blatt 1 |
| | | | | WW-D20-350 | von 1 Bl. |
| Zust. | Änderung | Datum | Name | (Dateiname) WW-D20-350 Datenblatt... | A2 |